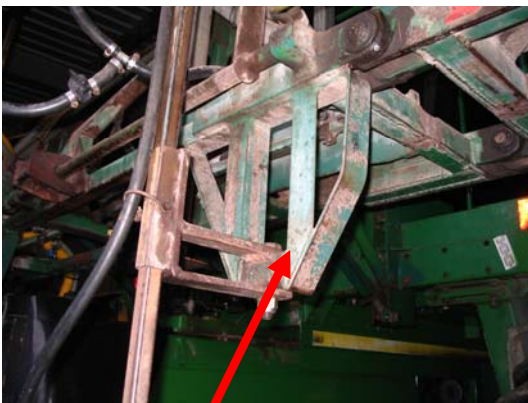




## Spray rig modifications from 1.5 m to 1.8 m

The Bugeja's of Homebush began planting into a controlled-traffic system in 2006. It was then necessary to modify the spray rig to work at 1.8 m, however the majority of the farm was still at 1.5 m. To be able to spray the 2 different row widths they developed extension arms for the droppers, and added an extension to the rails for the wheels to move between 1.5 m and 1.8 m, on their hydraulic drive high rise tractor.



This is the original spray dropper attachment.

All they did was build an arm to bolt on and bring the dropper out 300 mm wider.



Original dropper position.

Extension arm.

New dropper position.



The extension arms unattached.

They also extended the rails to move the wheels between 1.5 m and 1.8 m.



Now it takes one person about 30 minutes to move the wheels out and install the dropper extensions to make the spray rig suitable for 1.8 m row spacings. The best thing about this modification is that the Bugeja’s were able to do these themselves, in their own shed. “There was no big expense to have a high rise tractor suitable for 1.5 m and 1.8 m”.

**Cost of modifications:**

Time	Cost	Benefits
Four days maximum	Less than \$1,000	Spray 1.5 m and 1.8 m system Make changes in your own shed Cheap to do



Homebush Innovative Farmers Group